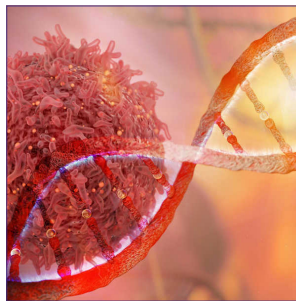

Keynote Forum

April 15, 2019

Cancer Nursing 2019



16th International Conference on
Oncology Nursing and Cancer Care
April 15-16, 2019 | Frankfurt, Germany



Dany Bell

Macmillan Cancer Support, UK

Cancer workforce: Competencies to support the workforce to deliver integrated, people-centred cancer care across different care settings

Macmillan has undertaken a workforce review utilising Macmillan's evidence and insight into the common concerns of people with cancer by using data obtained from our electronic holistic needs assessment and care planning tool; with the aim to identify the skills needed in the cancer workforce to address those concerns. This has enabled Macmillan to better understand the skills needed in the cancer workforce as a whole to deliver person centred care and support. This work is closely aligned to several other workforce projects e.g.

- Cancer Nurse Specialist and Patient Experience Theory of Change development
- Quality Standards development for Cancer Nurse Specialist
- An operational delivery model to deploy workforce and skills across care settings
- Cancer Workforce Census

Macmillan Cancer Support is working to strengthen capacity in the delivery of integrated, people-centred cancer services, as they recognise the significant limitations in available trained cancer workforce and the need for a cultural shift in how people with cancer are supported and empowered to ensure person centred care. Our workforce is not equipped across the range of care settings and there are other

workforce challenges. Macmillan need to be able to influence and support thinking differently about the workforce and ensure we can work with statutory organisations to enable the right training, roles and competence frameworks to be developed and used. As a result we have been working with workforce experts and key stakeholders and developed a methodological skills mix framework to test and to ultimately build workforce capacity through policy dialogues. Workforce is challenging in all countries and identifying core skills to ensure needs of people with cancer are met is relevant widely to all countries.

Speaker Biography

Dany Bell is Specialist Advisor for Treatment and Recovery at Macmillan Cancer Support. She is a Registered General Nurse with 31 years' experience in the NHS. and has a Diploma in Palliative Care and Master of Science Degree in Pain Management. During her career she has clinically managed a surgical oncology ward, hospice ward, has experience as a clinical nurse specialist in specialist palliative care as well as being lead clinical nurse for a hospital specialist palliative care team. She has undertaken senior management roles in the NHS including lead cancer nurse and cancer manager as a joint role; as well as a head of operations role for an acute trust. Within her management roles has undertaken systemwide service improvement to redesign pathways and improve experience and care; as well as implement new service reconfigurations in sarcoma and urology. She is having special interest in emotional and psychological care, with a passion to improve this in cancer care, has undertaken various counselling in health and social care training qualifications. She has been employed by Macmillan since April 2014. In her current role she advises Macmillan on strategic direction and provides insight and expertise across treatment and recovery thematic areas.

e: DaBell@macmillan.org.uk



Dabbu Kumar Jaijyan

Rutgers University, USA

Unraveling the role of HCMV in Glioblastoma progression using an inducing HCMV model

Cancer is the leading cause of death worldwide. The Human cytomegalovirus (HCMV) plays important role in several malignancies including breast cancer, colorectal cancer, brain tumor and others. Breast cancer is considered as the leading cause of deaths among women. Previous reports have demonstrated that the HCMV genome contains oncogenic genes and have potential to cause the different types of cancer. The HCMV is a betaherpes virus and its primary infection leads to the lifelong latent or persistent infection. The primary HCMV infection is asymptomatic and may cause the severe health issues in immunocompromised population especially in organ transplant patients, AIDS or cancer patients. Furthermore, the congenital HCMV infection causes the fetus malformation and is the leading cause of birth defects. Studies have found HCMV DNA in the numerous forms of tumors and concurrent HCMV specific antibodies in cancer patients. Taken together,

these findings suggested a connection between HCMV and cancer progression. In this study, we aimed to identify and study the main factors encoded by HCMV which are responsible for the breast and brain cancer development. We are using a robust, tightly controlled, reversible and highly sensitive AID system to study the HCMV encoded proteins and their roles in cancer development

Speaker Biography

Dabbu Kumar Jaijyan is currently a scientist at New Jersey Medical School, Rutgers University, USA. He completed his PhD in Biotechnology at National Institute of Immunology, India and completed his MSc at Jawaharlal Nehru University, India. He also did his under graduate in the year 2003-2006 at Delhi University, India. He has over 5 publications and has been working on the infectious disease caused by the viruses like VZV, HIV, CMV and ZIKA. He has developed a model to study the role of HCMV induced tumor and also been involved in developing therapeutic tools in collaboration with world renowned pharmaceutical industries.

e: dkj28@njms.rutgers.edu

 Notes: